

A SELECTION FROM

CHESS PROBLEMS

COMPOSED DURING THE PAST 30 YEARS

by CHARLES WHITE

Surgeon Major Army Medical
Staff (Late Royal Artillery)

(C. W. OF SUNBURY)

[1885]

An Electronic Edition
Anders Thulin, Malmö · 2009-07-04

DEDICATED TO NORA

(MY DAUGHTER)

PREFACE

The greater number of the Problems here collected have appeared in different Magazines and Chess Columns.

They will be found to be throughout of an easy type, and without the subtle *coup de repos* or the numerous variations to each move of the attack so frequently met with in Problems by Composers of the present day. On this account I would suggest they are adapted for students of Problems to learn to solve positions by looking at the Diagram only, and not setting the Pieces on the Board.

Duals, I fear, exist in more than once case. Personally I am very tolerant of Duals, as long as they do not appear in the main play. They must be classed as blemishes rather than faults.

I have neither a Two-mover, a Sui-mate, or a Prize Problem to include, though some of the Problems have competed in the Tournaments of former days.

I take this opportunity of tendering my thanks to H. J. C. Andrews Esq., certainly the best living authority on all appertaining to this branch of Chess, for the kind advice and assistance he has given me in connection with this work.

C. W. OF SUNBURY

PREFACE TO ELECTRONIC EDITION

This edition is based on the printed edition, published by W.W. Morgan Jun. in 1885.

All problems have been computer tested using Heiner Marxen's program *Chest*. All found problems have been indicated in brackets in the stipulation: [*] indicates a problem which turned out to have multiple solutions, and [§] a problem that has at least one short solution. [†] indicates a problem without a solution in the stipulated number of moves. Further notes have been added, in brackets, in the solutions.

Solutions have been translated from descriptive notation to short algebraic, using 'S' to indicate knights.

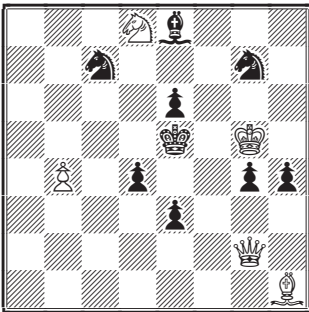
In a few cases, known sources have been added in brackets.

SECTION I

PROBLEMS COMPOSED BETWEEN 1854-1863

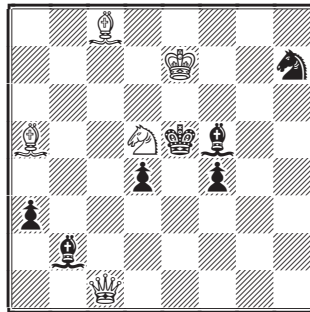
HOME

1.



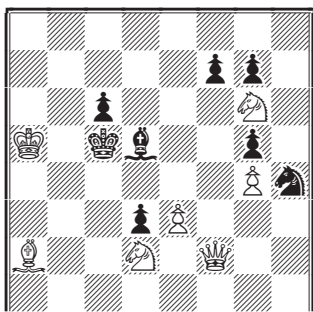
Mate in three moves

2.



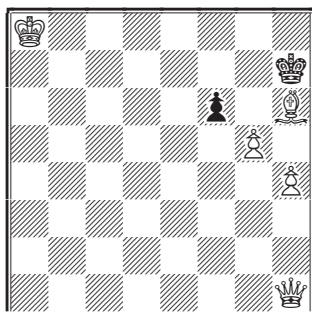
Mate in three moves

3.



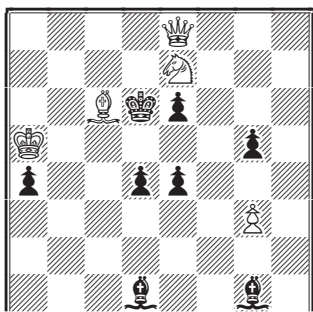
Mate in three moves

4.



Mate in three moves

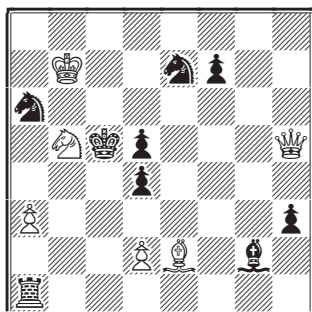
5.



Mate in three moves

[2, *Chess Monthly*, Jan., 1861]

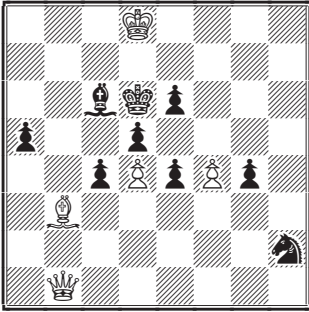
6.



Mate in three moves [†]

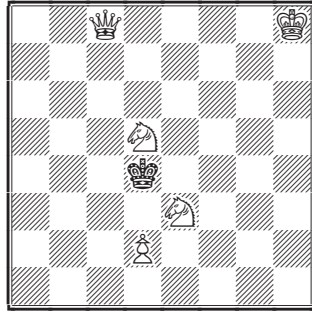
[235, *English Chess Problems*,
1876]

7.



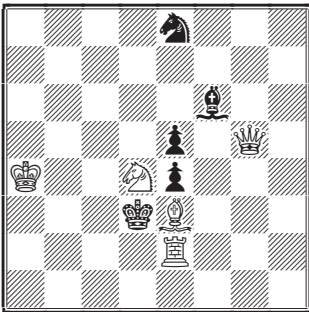
Mate in three moves

8.



Mate in three moves [*]

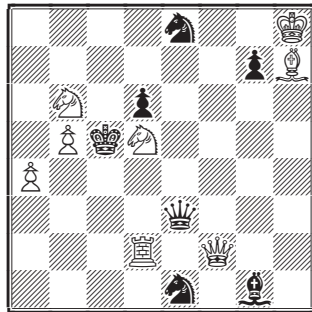
9.



Mate in three moves

[221, *Chess Monthly*, Apr., 1860]

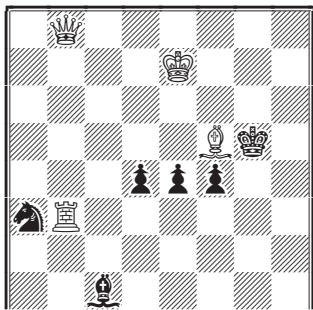
10.



Mate in three moves

[72, *Chess World*, Apr., 1867]

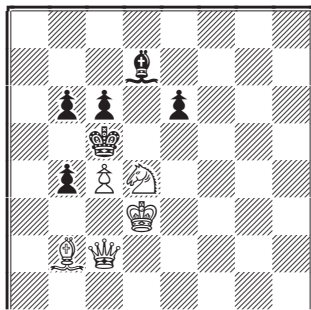
11.



Mate in three moves

[240, *English Chess Problems*,
1876]

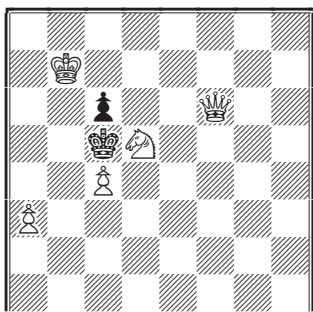
12.



Mate in three moves

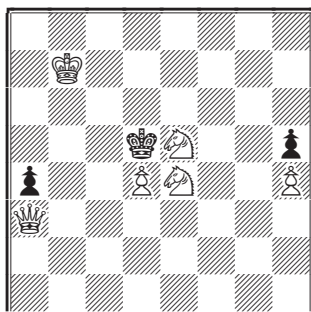
[237, *English Chess Problems*,
1876]

13.



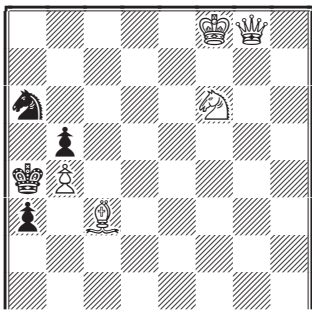
Mate in three moves

14.



Mate in three moves

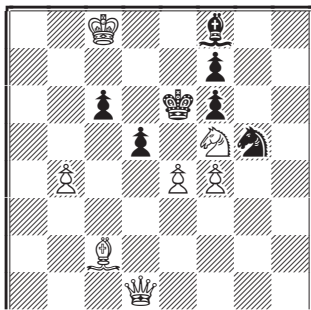
15.



Mate in three moves

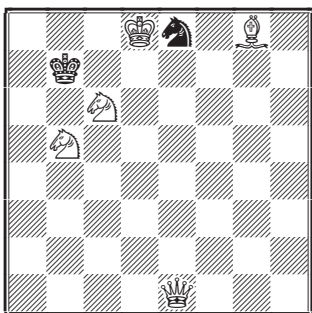
[241, *English Chess Problems*,
1876]

16.



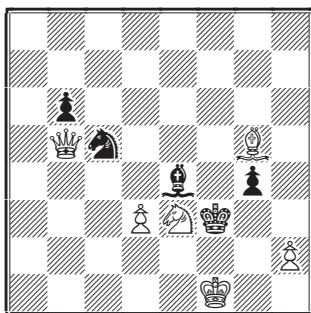
Mate in three moves

17.



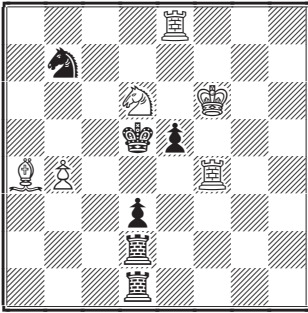
Mate in three moves [*]

18.



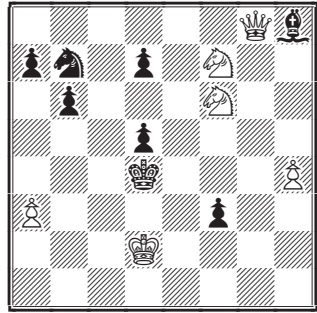
Mate in three moves

19.



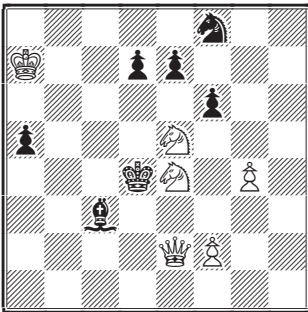
Mate in three moves

20.



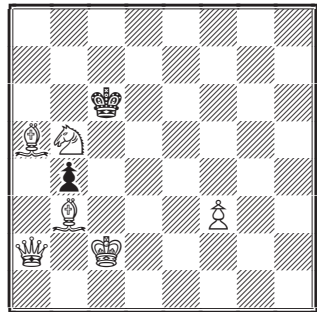
Mate in three moves

21.



Mate in three moves

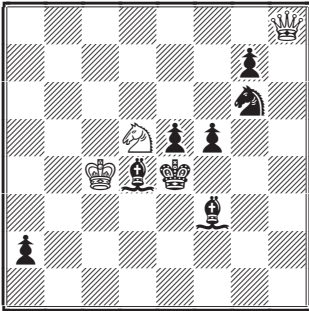
22.



Mate in three moves

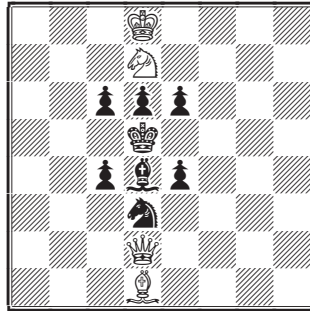
[76, *Chess World*, May, 1867]

23.



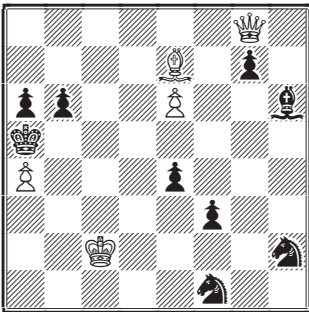
Mate in four moves

24.



Mate in four moves [†]

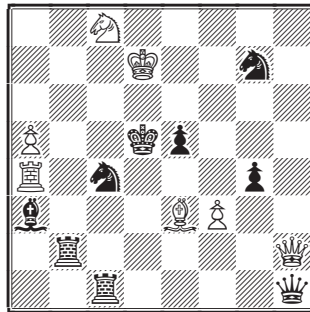
25.



Mate in four moves

[17, *Book of the First American Chess Congress*, 1859]

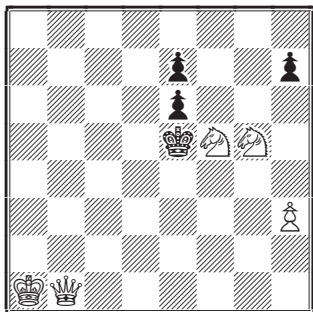
26.



Mate in four moves

[459, *English Chess Problems*, 1876]

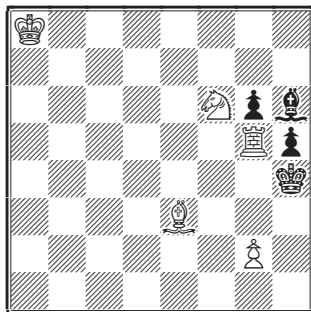
27.



Mate in four moves

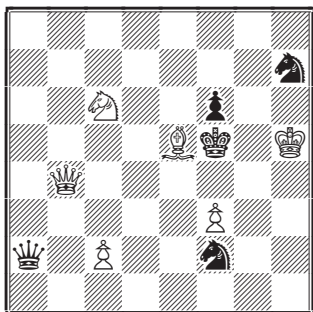
[457, *English Chess Problems*,
1876]

28.



Mate in four moves

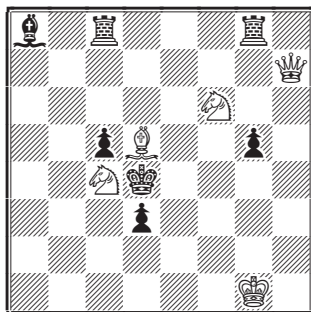
29.



Mate in four moves

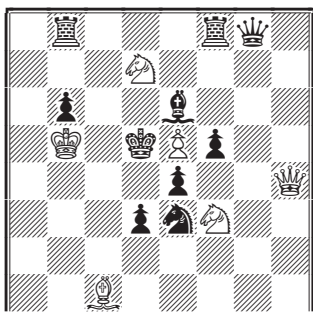
[453, *English Chess Problems*,
1876]

30.



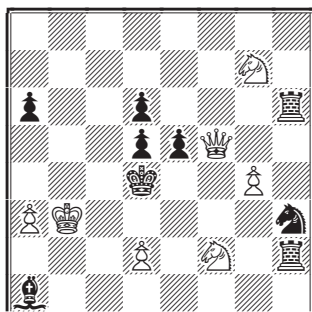
Mate in four moves

31.



Mate in four moves

32.



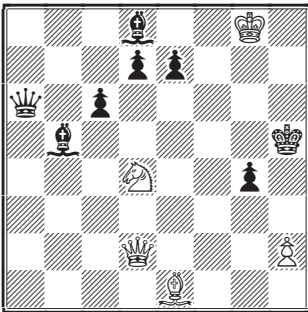
Mate in four moves

SECTION II

PROBLEMS COMPOSED BETWEEN 1864-1873

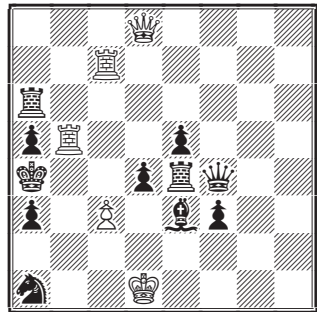
INDIA

33.



Mate in 3 moves

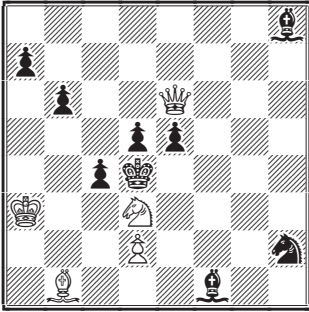
34.



Mate in 3 moves

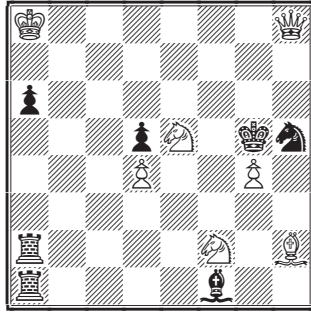
[236, *English Chess Problems*,
1876]

35.



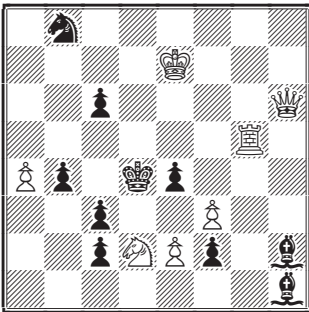
Mate in 3 moves

36.



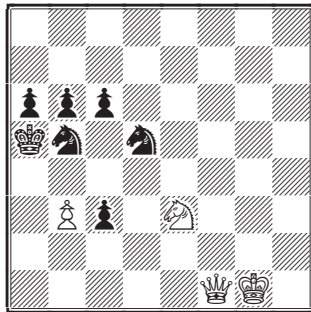
Mate in 3 moves

37.



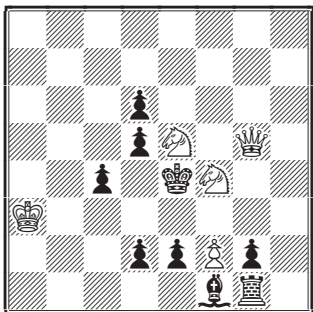
Mate in 3 moves

38.



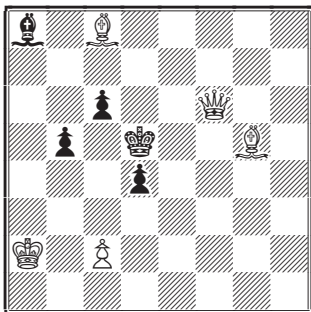
Mate in 3 moves

39.



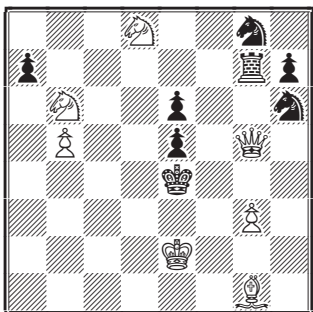
Mate in 3 moves

40.



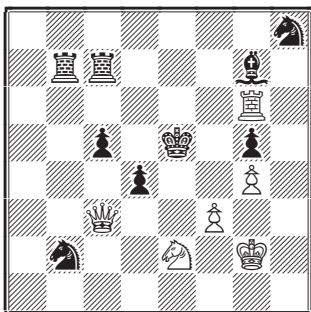
Mate in 3 moves

41.



Mate in 3 moves

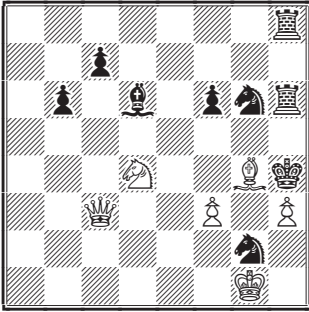
42.



Mate in 3 moves

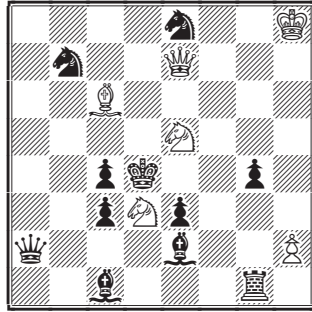
[234, *English Chess Problems*,
1876]

43.



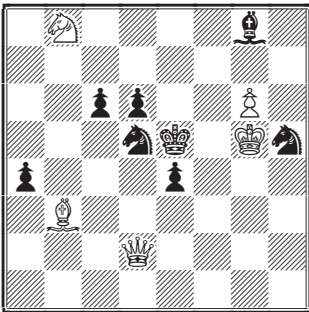
Mate in 3 moves

44.



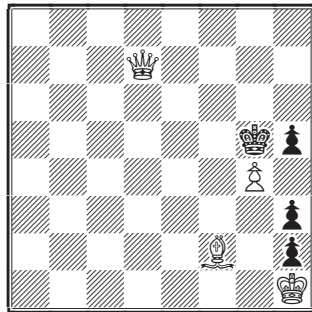
Mate in 3 moves

45.



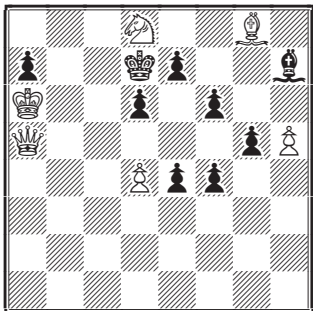
Mate in 3 moves

46.



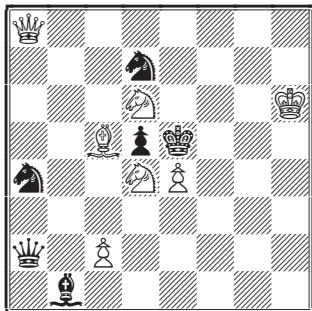
Mate in 3 moves

47.



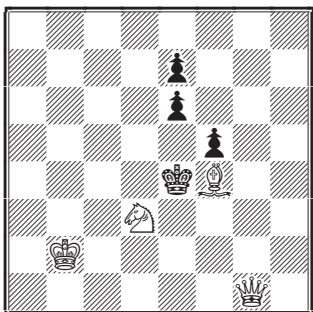
Mate in 3 moves

48.



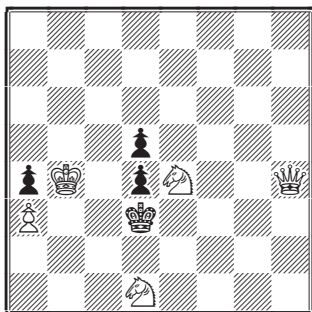
Mate in 3 moves

49.



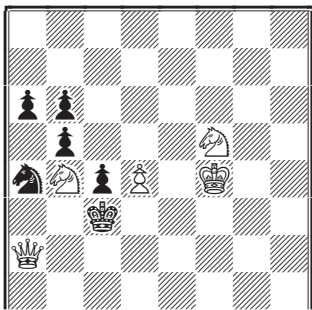
Mate in 3 moves

50.



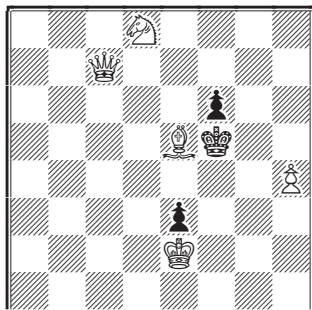
Mate in 3 moves

51.



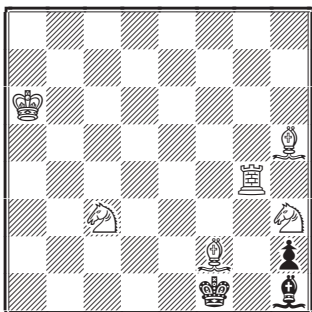
Mate in 3 moves

52.



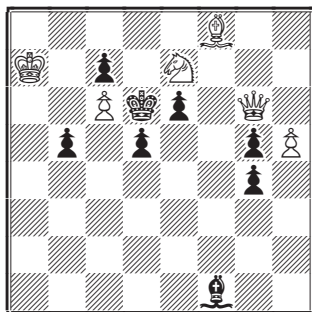
Mate in 3 moves [*]

53.



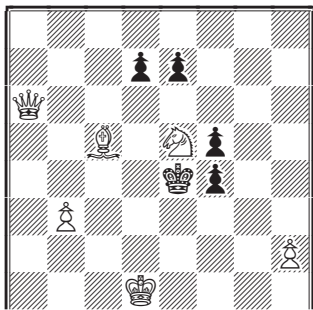
Mate in 3 moves

54.



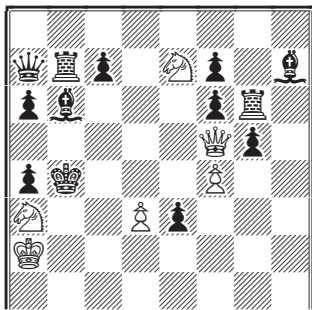
Mate in 3 moves

55.



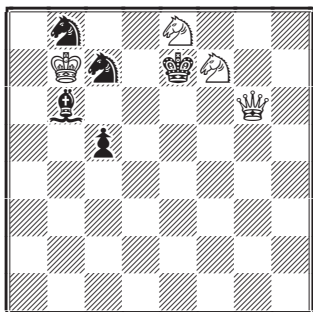
Mate in 3 moves

56.



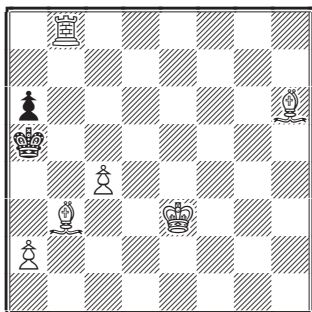
Mate in 3 moves

57.



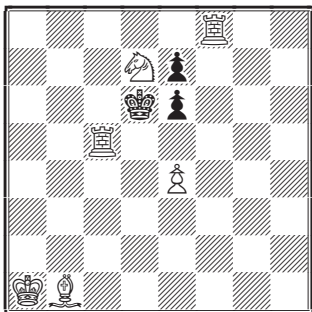
Mate in 4 moves [*]

58.



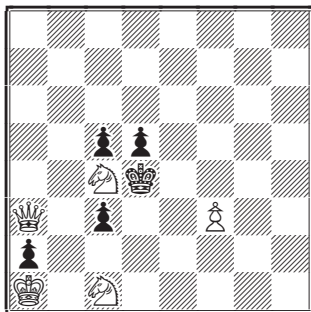
Mate in 4 moves

59.



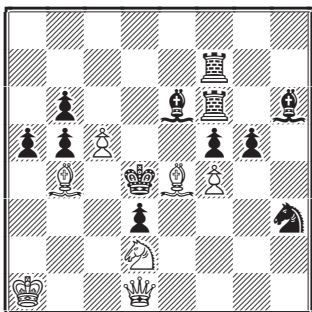
Mate in 4 moves [*]

60.



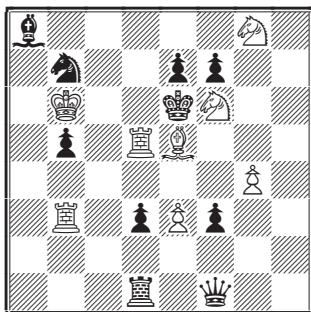
Mate in 4 moves

61.



Mate in 4 moves

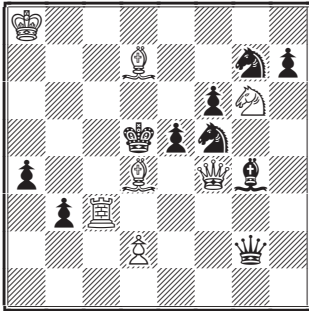
62.



Mate in 4 moves

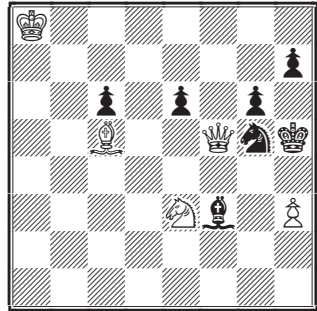
[455, *English Chess Problems*,
1876]

63.



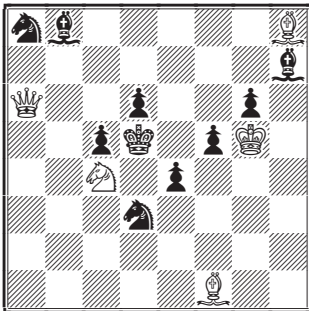
Mate in 4 moves

64.



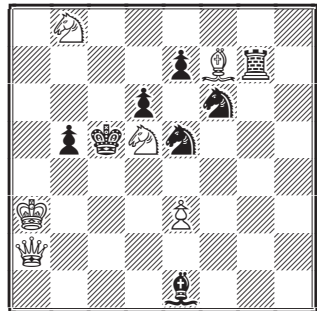
Mate in 4 moves

65.



Mate in 4 moves

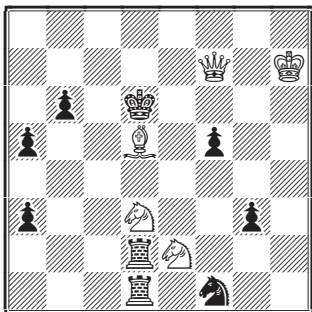
66.



Mate in 4 moves

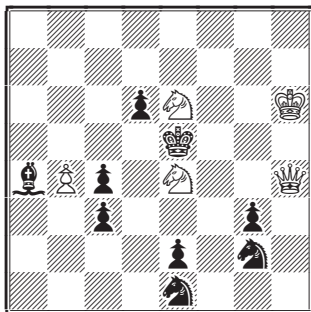
[454, *English Chess Problems*,
1876]

67.



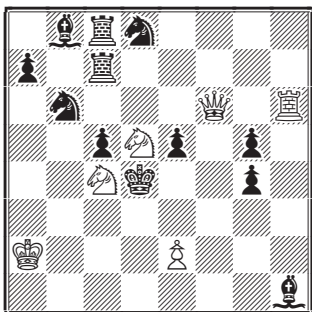
Mate in 4 moves

68.



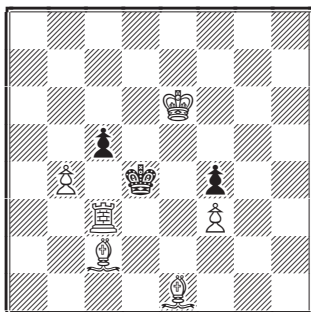
Mate in 4 moves

69.



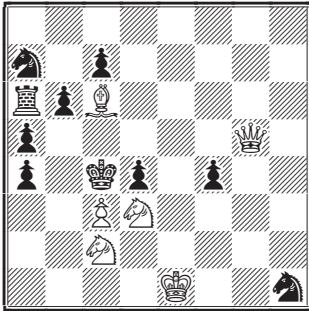
Mate in 4 moves

70.



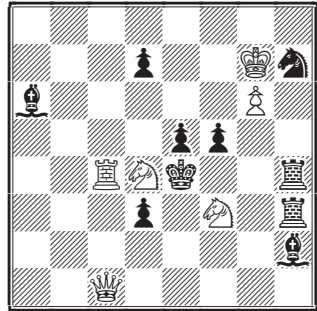
Mate in 4 moves [§]

71.



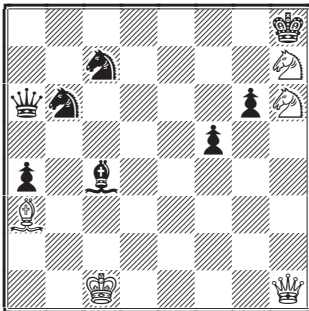
Mate in 4 moves

72.



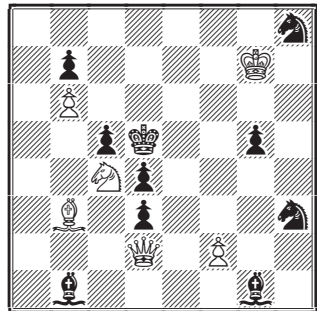
Mate in 4 moves

73.



Mate in 4 moves

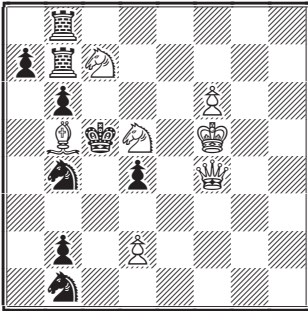
74.



Mate in 4 moves

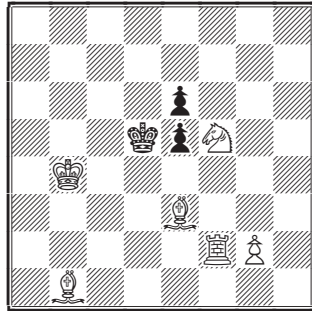
[458, *English Chess Problems*,
1876]

75.



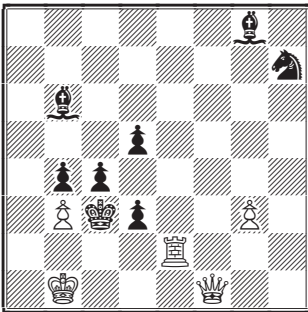
Mate in 4 moves

76.



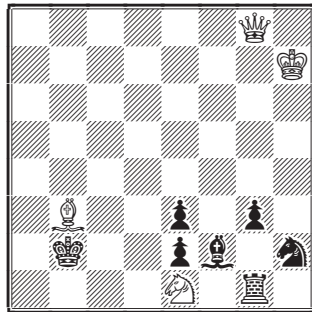
Mate in 4 moves

77.



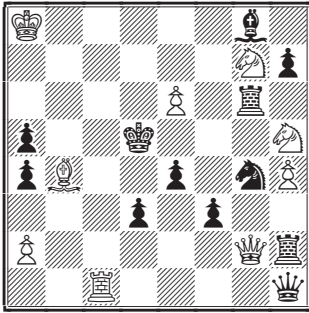
Mate in 4 moves

78.



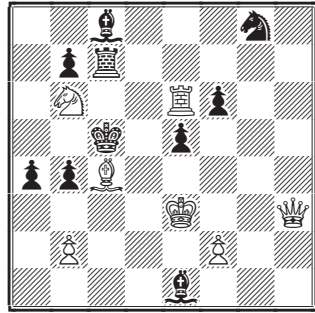
Mate in 4 moves [S]

79.



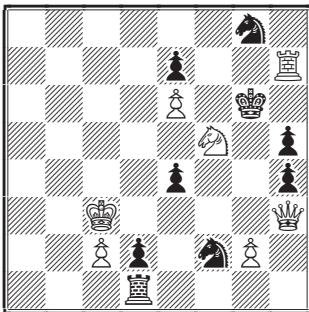
Mate in 4 moves

80.



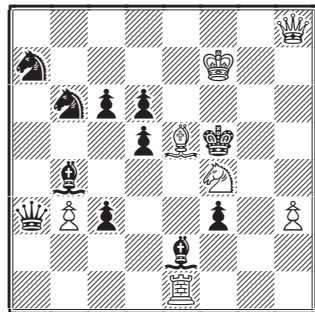
Mate in 4 moves [?]

81.



Mate in 4 moves

82.



Mate in 4 moves [*]

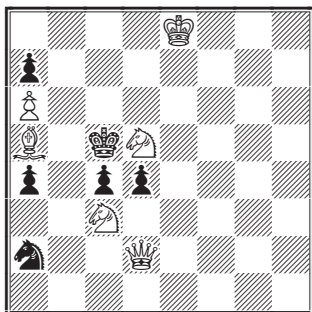
[*Palamède*, 1866 ?]

SECTION III

PROBLEMS COMPOSED BETWEEN 1874-1883

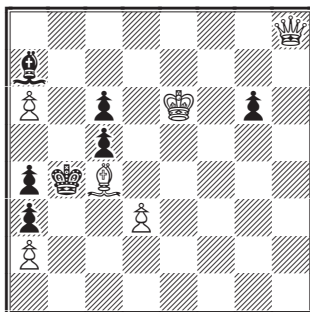
INDIA

83.



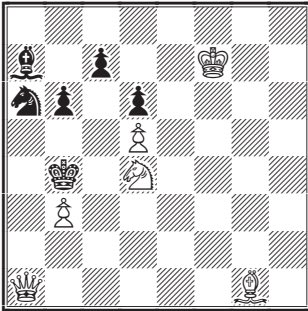
Mate in 3 moves

84.



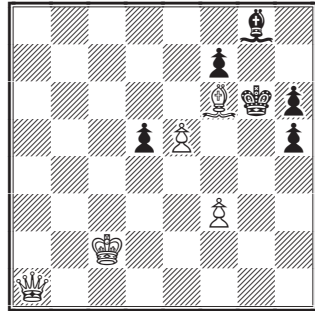
Mate in 3 moves

85.



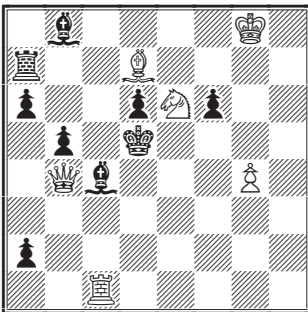
Mate in 3 moves [*]

86.



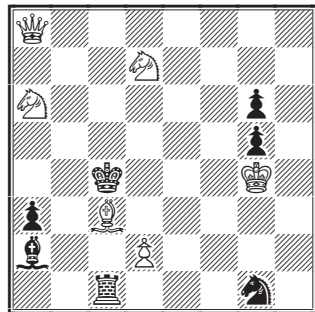
Mate in 3 moves

87.



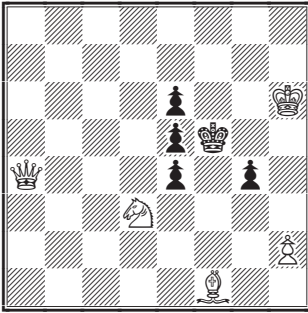
Mate in 3 moves

88.



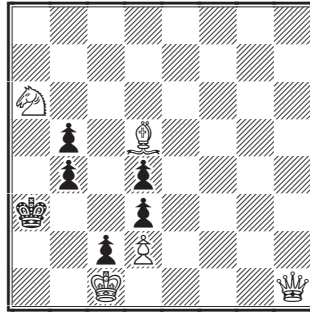
Mate in 3 moves [§]

89.



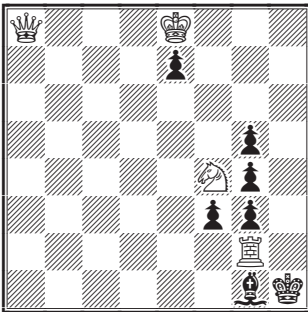
Mate in 3 moves

90.



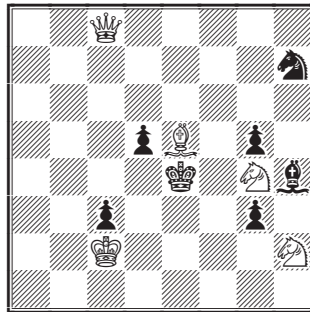
Mate in 3 moves

91.



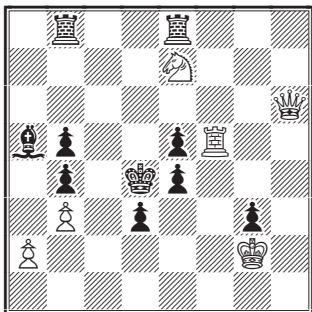
Mate in 3 moves

92.



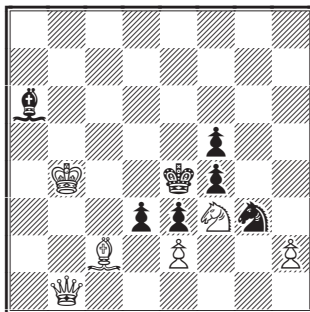
Mate in 3 moves

93.



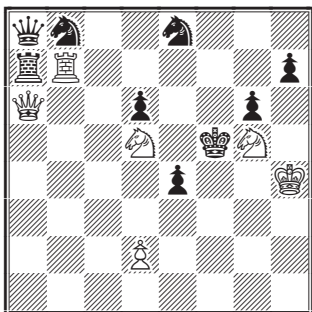
Mate in 3 moves

94.



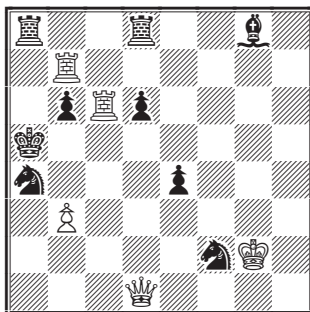
Mate in 3 moves

95.



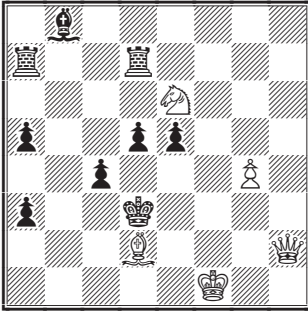
Mate in 3 moves

96.



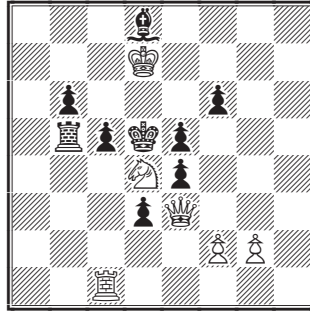
Mate in 4 moves

97.



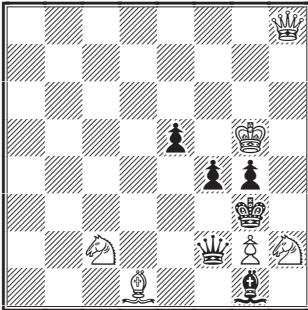
Mate in 4 moves

98.



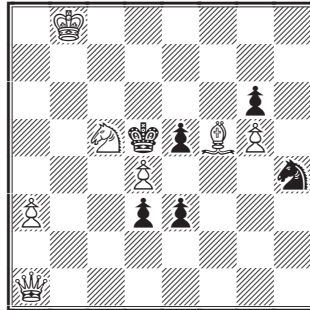
Mate in 4 moves [§]

99.



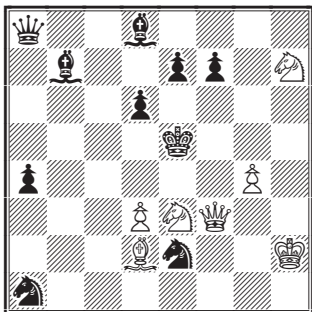
Mate in 4 moves

100.



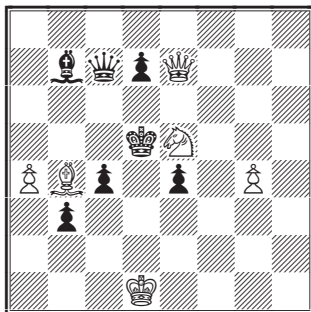
Mate in 4 moves

101.



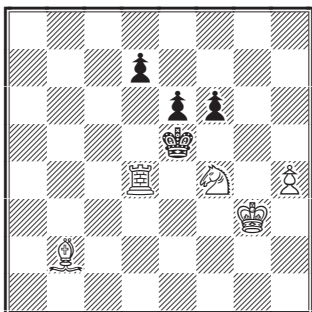
Mate in 4 moves

102.



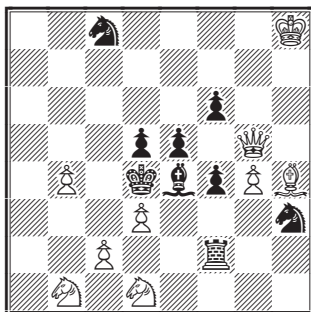
Mate in 4 moves

103.



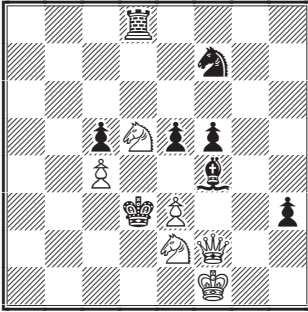
Mate in 4 moves [*]

104.



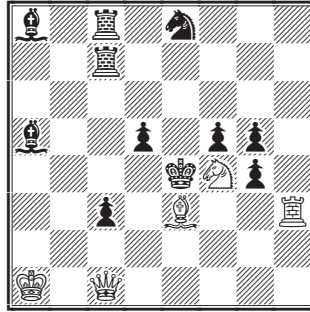
Mate in 4 moves [†]

105.



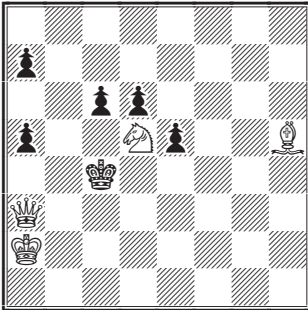
Mate in 4 moves

106.



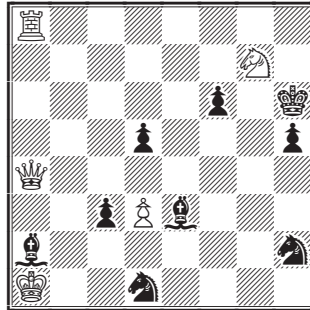
Mate in 4 moves

107.



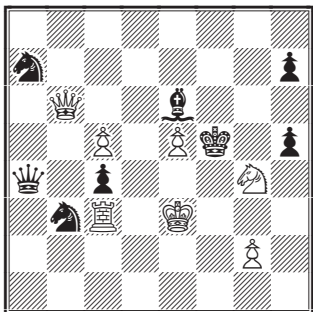
Mate in 4 moves [*]

108.



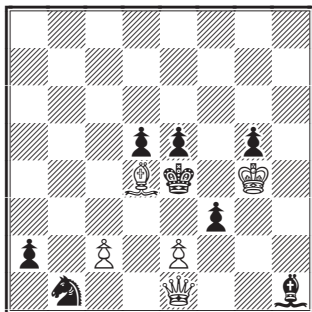
Mate in 4 moves

109.



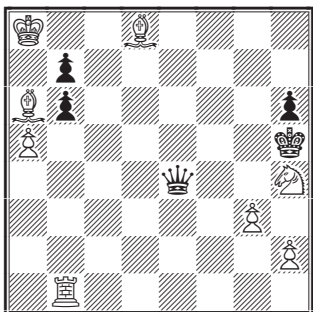
Mate in 5 moves

110.



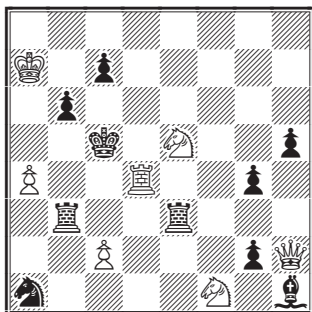
Mate in 5 moves [†]

111.



Mate in 5 moves

112.



Mate in 5 moves [*]

[507, *English Chess Problems*,
1876]

SOLUTIONS

- | | | | |
|-----|--------------------|----------------|----------|
| 1. | 1. Qc6, Sd5 | 2. Qd7, ~ | 3. ♠ |
| 2. | 1. Bb7, Bxc1 | 2. Se3, ~ | 3. B ♠ |
| 3. | 1. Qxf7, Sxg6 | 2. Qe6, ~ | 3. ♠ |
| 4. | 1. h5, fxg5 | 2. Qa1, ~ | 3. Q ♠ |
| 5. | 1. Sf5†, Ke5/Kc5 | 2. Bd5, ~ | 3. Q ♠ |
| | 1. ... exf5 | 2. Qd7†, ~ | 3. Q ♠ |
| 6. | 1. Qh6, Sg6 | 2. Qe3, ~ | 3. ♠ |
| | 1. ... d3 | 2. Qb6†, Kc4 | 3. Sd6♣ |
| | [1. ... f6!] | | |
| 7. | 1. Bxc4, e5 | 2. Qxe4, ~ | 3. ♠ |
| 8. | 1. d3, Kxd3 | 2. Qg4, Kd2 | 3. Qd1♠ |
| | 1. ... Ke5 | 2. Qc7†, Ke6 | 3. Qe7♠ |
| | | 2. ... Kd4 | 3. Qc3♠ |
| | [1. Qc4†! 1. Qe6!] | | |
| 9. | 1. Qg8, exd4 | 2. Rc2, ~ | 3. Q ♠ |
| 10. | 1. Rd4, Qxd4 | 2. Sd7†, Kxd5 | 3. Qf7♠ |
| | | 2. ... Kc4 | 3. Qa2♠ |
| | 1. ... Kxd4 | 2. Qb2†, ~ | 3. Q ♠ |
| 11. | 1. Rh3, Kxf5 | 2. Qe5†, ~ | 3. Q/R ♠ |
| 12. | 1. Sf5, exf5 | 2. Qc3, ~ | 3. Q ♠ |
| 13. | 1. Qh4, cxd5 | 2. Qf4, ~ | 3. Q ♠ |
| 14. | 1. Kc7, Kxd4 | 2. Sg3, ~ | 3. Qd6♠ |
| | 1. ... Kxe4 | 2. Kd6, ~ | 3. Q ♠ |
| 15. | 1. Sd7, Sxb4 | 2. Qa2, ~ | 3. Q/S ♠ |
| 16. | 1. Ba4, Sxe4 | 2. Qxd5†, cxd5 | 3. Bd7♠ |
| | | 2. ... Kxd5 | 3. Bb3♠ |
| 17. | 1. Qa5, Kxc6 | 2. Sd6, ~ | 3. ♠ |
| | [1. Qb4!] | | |

18. 1. Qc6, Bxc6 2. Sc4, ~ 3. S ♯
1. ... Sxd3 2. Qc2, ~ 3. Q ♯
19. 1. Sf5, exf4 2. Ree4, ~ 3. ♯
1. ... Re1/Re2 2. Rxe5†, Rxe5 3. Rd4♯
20. 1. Sd8, Bxf6 2. Qg4†, ~ 3. ♯
1. ... Ke5 2. Qxd5†, ~ 3. Qg5♯
21. 1. Sd6, Kd5 2. Qc4†, KxS 3. Sf7♯
1. ... exd6 2. Qc4†, Kxe5 3. f4♯
22. 1. Bc7, Kb7 2. Qa8†, Kxa8 3. Bd5♯
1. ... Kc5 2. Sd4, Kxd4 3. Qa7♯
23. 1. Qh2, a1S 2. Qd2, Sf4 3. Qe3†, Bxe3 4. Sc3♯
24. 1. Qxd3, e3 2. Ke7, c5 3. Ba4, cxd3 4. S ♯
[2. Bf3♯! *diagram misprinted?*]
25. 1. Qc8, Bd2 2. Kb3, Se3 3. Qc5†, bxc5 4. Bd8♯
26. 1. Qxb2, Rb1 2. Rb4, Bxb4 3. Qd2†, SxQ 4. S ♯
27. 1. Qe4†, Kf6 2. Sh6, e5 3. Se6, Kxe6 4. Qc6♯
2. ... Kxg5 3. Sg8, ~ 4. ♯
28. 1. Kb7, Bf8 2. Se4, Bd6 3. Sd2, ~ 4. ♯
29. 1. Qe7, Qa7 2. Bd6, Sg5 3. Qd7†, ~ 4. ♯
30. 1. Qh2, Bxd5 2. Qb2†, Kxc4 3. Sd7, ~ 4. ♯
31. 1. Qd8, exf3 2. Sf6†, Kxe5 3. Qd4†, Kxd4 4. Bb2♯
32. 1. Qh7, Rxf2 2. Se6†, Rxe6 3. Qa7†, K~ 4. Qe3♯
33. 1. Se6, dxe6 2. Bh4, ~ 3. Qg5♯
34. 1. Ra7, Rxa7 2. Qxa5†, Rxa5 3. Rb4♯
1. ... Kxb5 2. Qd5†, K~ 3. Q/R ♯
35. 1. Sf4, exf4 2. Be4, ~ 3. Q ♯
1. ... Bg2 2. Qxb6†, axb6 3. Se6♯
36. 1. Bg3, Sxg3 2. Qh4†, K~ 3. Q/S ♯
1. ... Rxf2 2. Qg8†, ~ 3. ♯
37. 1. Re5, cxd2 2. Qe3†, ~ 3. ♯
1. ... Bxf3 2. Sb3†, Kc4 3. Qe6♯
38. 1. Qc4, Sb4 2. Qc5, ~ 3. Sc4♯
39. 1. Sfd3, cxd3 2. Sf3, ~ 3. ♯
1. ... Kd4 2. Qe3†, Kc3 3. S ♯
40. 1. Be3, dxe3 2. c3, ~ 3. Q ♯
41. 1. Sb7, Rxb7 2. Bd4, exd4 3. Qf4♯
1. ... axb6 2. Sd6†, Kd5 3. Qd2♯

42. 1. Sf4, dxc3 2. Re6†, ~ 3. †
 1. ... Sxg6 2. Qe1†, ~ 3. †
43. 1. f4, Bxf4 2. Qg3†, ~ 3. †
44. 1. Be4, Kxe4 2. Sf3†, ~ 3. †
45. 1. Qe3, Shf6 2. Qc3†, ~ 3. †
 1. ... axb3 2. Sxc6†, Ke6 3. Qh3‡
46. 1. Qf7, Kxg4 2. Bh4, Kxh4 3. Qf4‡
 1. ... hxg4 2. Bg3, Kh6 3. Bf4‡
 1. ... h4 2. Qe6, Kf4 3. Qf5‡
47. 1. Sf7, Ke6 2. Qf5†, Bxf5/ Kxf5 3. S †
 1. ... e6 2. Qd8†, Kc6 3. Qxd6‡
 1. ... e5 2. d5, ~ 3. †
48. 1. Qg8, Sdxc5 2. Qg7†, Kxd6 3. e5‡
 1. ... Saxc5 2. Qg3†, Kxd4 3. c3‡
49. 1. Se5, Kxf4 2. Kc3, K~ 3. Qd4‡
 1. Se5, Kd5 2. Qc1, K~ 3. Q †
50. 1. Qe1, dxe4 2. Se3, dxe3 3. Qd1‡
51. 1. Ke3, Kxb4 2. Se7, ~ 3. S †
52. 1. Qc6, fxe5 2. Qg2, ~ 3. †
 1. ... Kxe5 2. Kxe3, ~ 3. †
 [1. Kf3!]
53. 1. Rg2, Kxg2 2. Sd5, ~ 3. †
54. 1. Qd3, Bxd3 2. Sg6†, ~ 3. †
 1. ... Ke5 2. Sg6†, Kf6 3. Qxf1‡
55. 1. Bd6, exd6 2. Sf3, ~ 3. Q †
56. 1. d4, Rh6 2. Qa5†, Bxa5/ Kxa5 3. S †
57. 1. Se5, Sxe8 2. Qf7†, Kd8 3. Qd7†, Sxd7 4. Sc6‡
 There are other variations.
 [1. Qf6†!]
58. 1. Ba4, Kxa4 2. Bf8, a5 3. Bb4, axb4 4. Ra8‡
 2. ... Ka5 3. Rb3, Ka4 4. Ra3‡
59. 1. Ba2, e5 2. Be6, Kxe6 3. Sb8, Kd6 4. Rc6‡
 1. ... Kxd7 2. Rd8†, Kxd8 3. Bxe6, Ke8 4. Rc8‡
 [1. e5†! 1. Rf3! 1. Rf2! 1. Rf1!]
60. 1. Qa8, c2 2. Qh8†, Kxc4 3. Qb2, d4 4. Qb3‡
61. 1. Qe1, axb4 2. Bb7, gxf4 3. Qe5†, Kxe5 4. Sf3‡

62. 1. Bf4, exf6 2. Rb4, Kxd5 3. Re4, ~ 4. S ♯
63. 1. Bxe5, hxg6 2. d4, Qc2 3. Qe4†, Qxe4/ Qxe4
4. R/B ♯
64. 1. Sg2, e5 2. Qf4, exf4 3. Sxf4†, K~ 4. B ♯
65. 1. Qa4, f4 2. Se3†, fxe3 3. Qxe4†, Kxe4 4. Bg2♯
66. 1. Kb3, Rxf7 2. Qa8, Sxd5 3. Qc6†, Sxc6 4. Sd7♯
67. 1. Be6, Rxd3 2. Qd7†, Ke5 3. Bd5, ~ 4. Q ♯
68. 1. Qf6†, Kd5 2. b5, Bxb5 3. S6c5, ~ 4. Q/S ♯
69. 1. e3†, Kxd5 2. Qf1, Ke4 3. Qf5†, Kxf5 4. Sd6♯
70. 1. Be4, c4 2. Ke7, Ke5 3. Rd3, cxd3 4. Bc3♯
[1. Ra3!]
71. 1. Kd2, dxc3† 2. Kc1, Sxc6 3. Qb5†, Kxb5 4. Sa3♯
There are other variations.
72. 1. Sd2†, Kd5 2. Rc8, d6 3. Qc5†, dxc5 4. Rd8♯
There are other variations.
73. 1. Sg5, Kg7 2. Sg8, Bxg8 3. Qh8†, Kxh8 4. Bb2♯
74. 1. Qe1, Sg6 2. Kf6, Sgf4 3. Qe4†, Kxe4 4. Sd2♯
75. 1. Qe5, Rxc7 2. Sc3†, Sd5 3. Qd6†, Kxd6 4. Se4♯
76. 1. Be4†, Kxe4 2. Kc4, exf5 3. Bf4, exf4 4. Re2♯
77. 1. Qe1†, Kd4 2. Re6, Bxe6 3. Qf2†, K~ 4. Q ♯
78. 1. Ba2, Rxe1 2. Qb3†, K~ 3. Bb1, ~ 4. Q ♯
[1. Sd3?!
79. 1. Qg3, axb4 2. Sf5, Rxe6 3. Qe5†, ~ 4. ♯
There are other variations.
80. 1. b3, axb3 2. Ke2, Bxe6 3. Sa4†, ~ 4. Q ♯
[1. ... Bd7!]
[1. Kd3]
81. 1. Sxh4†, Kg5 2. Kd4, Sxh3 3. Rg7†, K~ 4. S/P ♯
1. ... Kxh7 2. Qf5†, Kh8 3. Qf7, ~ 4. ♯
82. 1. Bd4, Ke4 2. Qh7†, Kxd4 3. Qd3†, ~ 4. S ♯
[1. Sxe2]
83. 1. Qg5, dxc3 2. Qe5, ~ 3. S ♯
84. 1. Qe5, Ka5 2. Qg5, ~ 3. Q ♯
85. 1. Bf2, b5 2. Qa5†, Kxa5 3. Sc6♯
1. ... Kc5 2. Sc6†, Kxd5 3. Qh1♯
[1. Be3]

86. 1. Qa6, Kf5 2. Bg5, ~ 3. Q †
87. 1. Qb3, B×b3 2. Bc6†, K×e6 3. Re1‡
1. ... Ke4 2. Re1†, ~ 3. Q/R †
88. 1. Sc7, Kd3 2. Qe4†, K×e4 3. Sc5‡
1. ... Kb3 2. Qa4†, K×a4 3. Sc5‡‡
[1. Qe4†!]
89. 1. Bh3, g×h3 2. Qa8, ~ 3. Q †
90. 1. Bb3, K×b3 2. Qa8, K~ 3. †
91. 1. Qa1, f×g2 2. Se6, Kh2 3. Qh8‡
1. ... f2 2. Rh2†, g×h2 3. Qa8‡
2. ... K×h2 3. Qh8‡
92. 1. Bd4, g×h2 2. Sf2†, ~ 3. Q †
93. 1. Rf2, R~d8 2. Qe3†, K~ 3. Q/S †
1. ... g×f2 2. Sf5†, ~ 3. Q †
94. 1. Qa2, S×e2 2. B×d3†, B×d3/ K×d3/ K×f3 3. Q †
95. 1. d4, S×a6 2. Rb1, Q×d5 3. Rf1‡
96. 1. Rcx b6, Sxb6 2. Qd4, Ra6 3. Qa4†, S×a4 4. b4‡
97. 1. Bf4, exf4 2. Ke1, Kc3 3. Qd2†, Kb3 4. Sc5‡
Black can vary his play.
98. 1. Sf5, c4 2. Q×d3†, c×d3/ exd3
3. Se3†, K~ 4. R(×)c4‡
[1. S×b5!]]
99. 1. Se1, Q×e1 2. S×g4, K×g2 3. Qh1†, ~ 4. †
100. 1. Qb2, g×f5/ S×f5
2. Qb3†, K×d4 3. Se6†, Ke4 4. Qb7‡
101. 1. Sd5, B×d5 2. Qf4†, S×f4 3. Bc3†, Ke6 4. Sf8‡
102. 1. Sc6, Q×c6 2. Qg5†, Kd4 3. Bc3†, K×c3 4. Qd2‡
103. 1. Kf3, Kf5 2. R×d7, e5 3. B×e5, ~ 4. R‡
[1. Sg6†]
104. 1. Q×f4, R×f4 2. Be1, B×d3 3. Bc3†, ~ 4. †
[1. ... Rf3!]
105. 1. Sd4, B×e3 2. Qc2†, K×d4 3. Se7, ~ 4. †
106. 1. Qe1, g×h3 2. Qe2, Ke5 3. Bd4†, K~ 4. †
1. ... c2 2. Bd2†, Kd4 3. Se6†, Kc4 4. Q †
107. 1. Qe3, c5 2. Qe4†, Kb5 3. Qa4†, K~ 4. †
[1. Sc7]

108. 1. Rg8, Kg5 2. Qh4†, K×h4 3. Sf5†, Kh3 4. Rg3‡
109. 1. Qd8, K×g4 2. Qh4†, K×h4 3. Kf4, h6 4. Rh3†, B×h3 5. g3‡
110. 1. Qb4, a1Q 2. Bf2†, Qd4 3. Q×b1, Q×f2 4. c3†, ke3 5. Qd3‡
[3. ... Qc3!]
111. 1. Be2†, Q×e2 2. h3, Qg4 3. Rb5†, Qg5 4. a×b6, Q~ 5. ‡
112. 1. Sf3, g×f3 2. c3, Rb×c3 3. Q×c7†, K×d4 4. Qd6†, K~ 5. S ‡
[1. Qf4]